

Riverflow[®] Pump by Current Systems Inc.

Performance • Reliability • Innovative Propeller Pump Technology

Designed Specifically for Lazy Rivers and High Capacity Water Features



Features

- Electronic variable speed control
- Ultra high flow rate
- Low operating cost
- Programmable timer
- Real time data logs
- 1Ø, 3Ø and 50 Hz compatible
- Low maintenance
- 5-year warranty
- Design and application support

Programmable Display



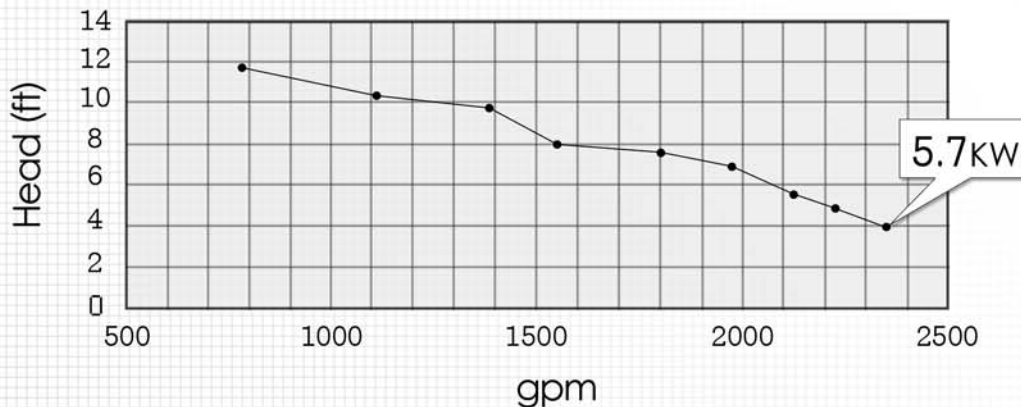
Local/Remote indication
 Motor rotation indicator
 Speed reference
 Actual value 3, Process value (selectable)
 Actual value 2, Output current (selectable)
 Actual value 1, Actual motor speed (selectable)
 Real time clock

Lazy River Application Data

*F/S	MPH	GPM	KW
10.7	7.0	2500	5.9
8.21	5.6	2000	4.1
6.16	4.2	1500	2.5
5.13	3.5	1250	2.1
4.11	2.8	1000	1.8

*Velocity at discharge

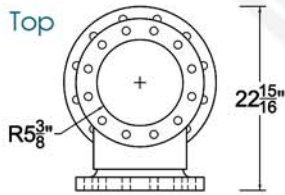
Riverflow Pump Performance Curve



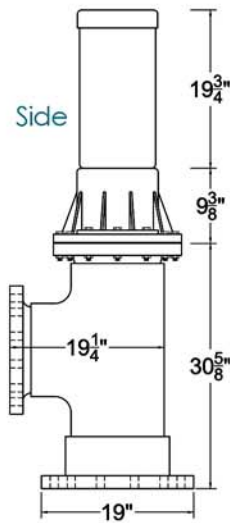
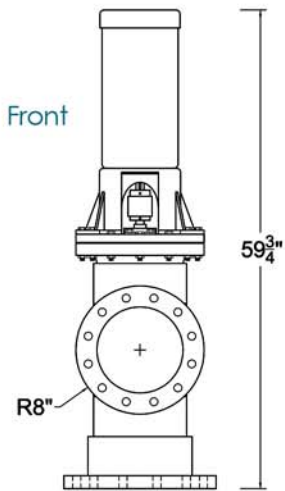
Riverflow[®] Pump by Current Systems Inc.



- Variable flow rate
- Security code lockout
- Programmable timer



Riverflow[®] Pump



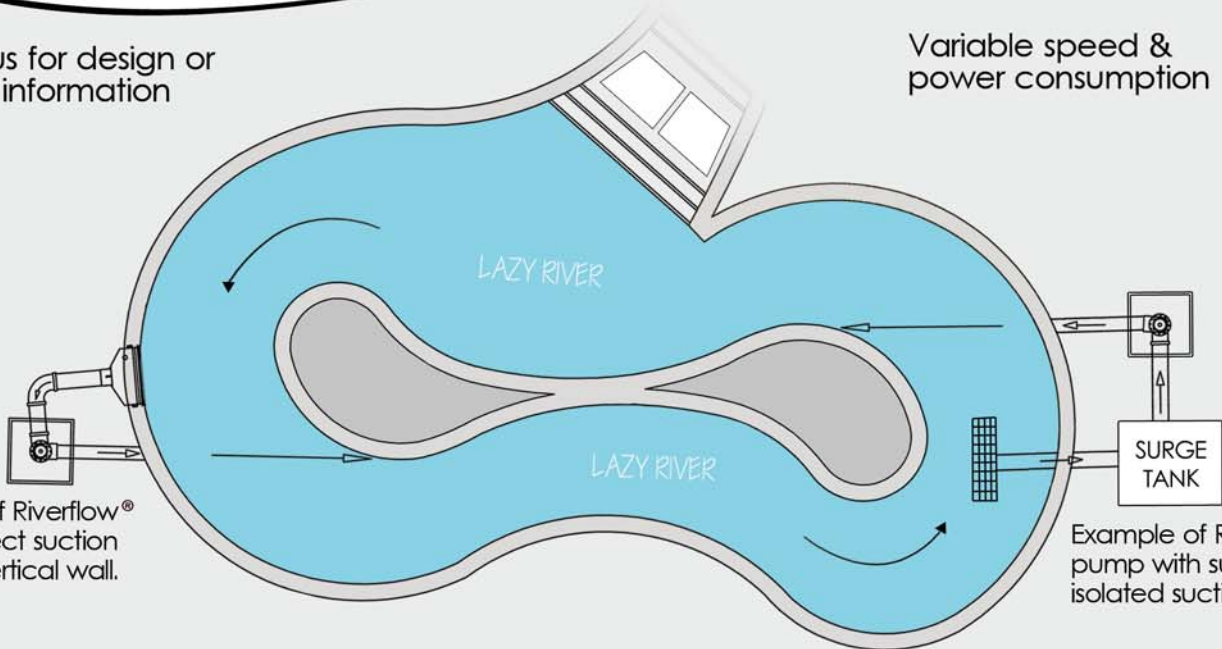
Commercial Pump | Product Information

RIVERFLOW MODEL CF104	
HP*	7.7 (Actual)
KW	5.7
230 VAC 3Ø	26 AMPS
460 VAC 3Ø	13 AMPS
SUCTION	12" FLANGED
DISCHARGE	10" FLANGED
VFD	NEMA 1 or 12

* Motor size 10 HP

Contact us for design or technical information

Variable speed & power consumption



Example of Riverflow[®] NSF-50 direct suction on a vertical wall.

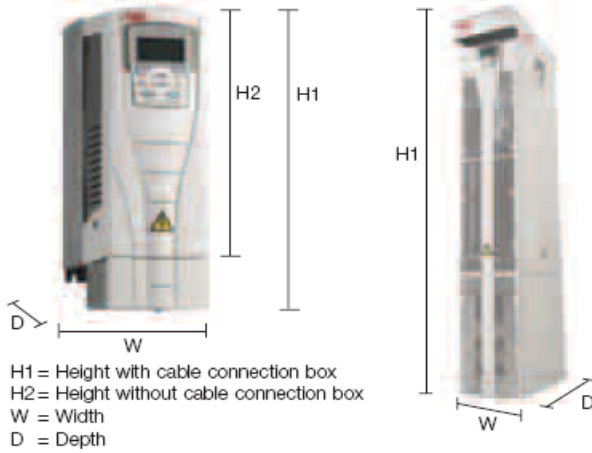
Example of Riverflow[®] pump with surge tank isolated suction.



Variable Frequency Drive Model # ABB ACS550-U1-08A8-4 5 HP 460 Volt

Wall mounted units

Free standing units



Wall mounted units

Frame size	Dimensions and weights								
	IP 21 / UL type 1					IP 54 / UL type 12			
	H1 mm	H2 mm	W mm	D mm	Weight kg	H mm	W mm	D mm	Weight kg
R1	369	330	125	212	6.5	441	215	238	8.2
R2	469	430	125	222	9	541	215	245	11.2
R3	583	490	203	231	16	604	257	276	18.5
R4	689	596	203	262	24	723	257	306	26.5
R5	739	602	265	286	34	776	369	309	38.5
R6	880	700	300	400	69	924	410	423	80

Free standing units

R7	1507	n/a	250 ⁷⁾	520 ⁷⁾	115
R8	2024	n/a	347 ⁷⁾	617 ⁷⁾	230

⁷⁾ The dimensions apply to bookshelf mounting. In flat type mounting the width and depth change places.
 n/a = not applicable

Height H1 14.5 inches **Depth** 8.5 inches **Width** 5 inches

Recommended input protection fuses for 380 - 480 V units

Type code	Frame size	IEC fuses		UL fuses	
		A	Fuse type ¹⁾	A	Fuse type
ACS550-01-03A3-4	R1	10	gG	10	UL Class T
ACS550-01-04A1-4	R1	10	gG	10	UL Class T
ACS550-01-05A4-4	R1	10	gG	10	UL Class T
ACS550-01-06A9-4	R1	10	gG	10	UL Class T
ACS550-01-08A8-4	R1	10	gG	15	UL Class T

**3-phase supply voltage 380-480 V
 Wall mounted units**

Ratings						Type code	Frame size
Normal use			Heavy-duty use				
P _N kW	P _N hp	I _{2N} A	P _{hd} kW	P _{hd} hp	I _{2hd} A		
4	5	8.8	3	3	6.9	ACS550-01-08A8-4	R1

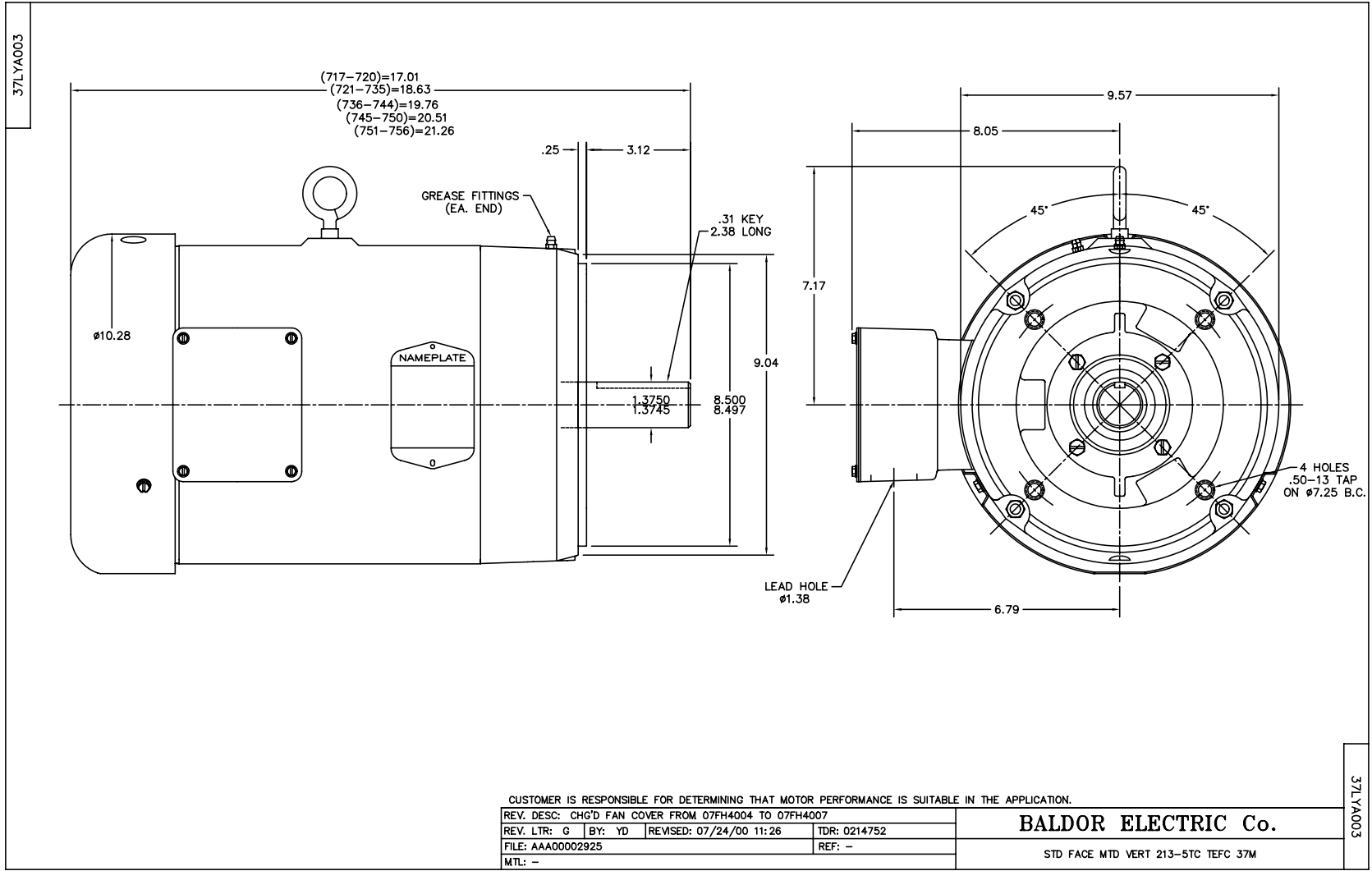
BALDOR® • *RELIANCE*

Product Information Packet

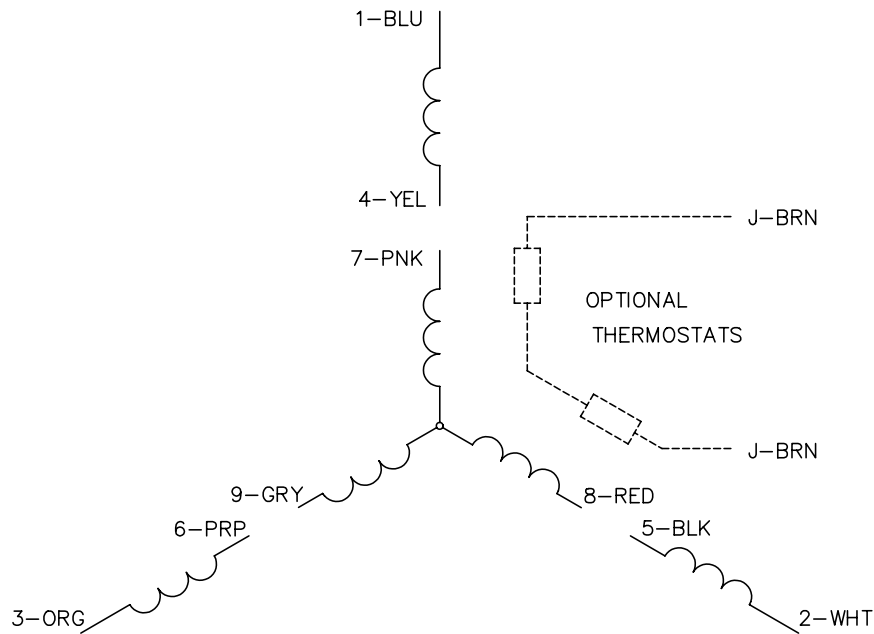
VM3708T

5HP,1150RPM,3PH,60HZ,215TC,3732M,TEFC,F1

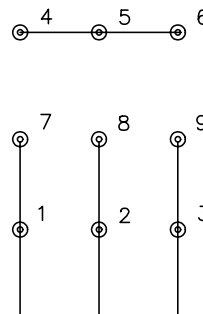
Product Detail							
Revision:	A	Status:	PRD/A	Change #:		Proprietary:	No
Type:	AC	Prod Type:	3732M	Elec. Spec:	37WGS070	CD Diagram:	CD0005
Enclosure	TEFC	Mfg Plant:		Mech Spec:	37A003	Layout:	37LYA003
Frame:	215TC	Mounting:	F1	Poles:	06	Created Date:	03-27-2007
Base:	N	Rotation:	R	Insulation:	F	Eff. Date:	08-17-2007
Leads:	9#14					Replaced By:	
Nameplate NP1256L							
CAT.NO.	VM3708T						
SPEC.	37A003S070						
HP	5						
VOLTS	208-230/460						
AMP	16.5-15.2/7.6						
RPM	1150						
FRAME	215TC	HZ	60	PH	3		
SER.F.	1.15	CODE	J	DES	B	CLASS	F
NEMA-NOM-EFF	86.5	PF	71				
RATING	40C AMB-CONT						
CC		USABLE AT 208V					
DE	6307	ODE	6206				
ENCL	TEFC	SN					



CD0005

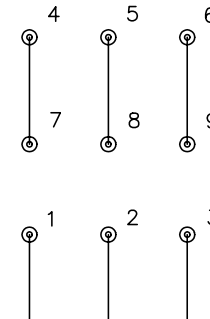


LOW VOLTAGE
(2Y)



LINE

HIGH VOLTAGE
(1Y)



LINE

NOTES:

1. INTERCHANGE ANY TWO LINE LEADS TO REVERSE ROTATION.
2. OPTIONAL THERMOSTATS ARE PROVIDED WHEN SPECIFIED.
3. ACTUAL NUMBER OF INTERNAL PARALLEL CIRCUITS MAY BE A MULTIPLE OF THOSE SHOWN ABOVE.
4. LEAD COLORS ARE OPTIONAL. LEADS MUST ALWAYS BE NUMBERED AS SHOWN.

REV. DESC: REVISE TO SHOW OPTIONAL COLORS			
REV. LTR: E	BY: JLP	REVISED: 01/19/99 10:15	TDR: 0171435
900000		FILE: AAA00005140	MDL: -
		MTL: -	

BALDOR ELECTRIC Co.

3PH, DV, 9 LEADS

CD0005